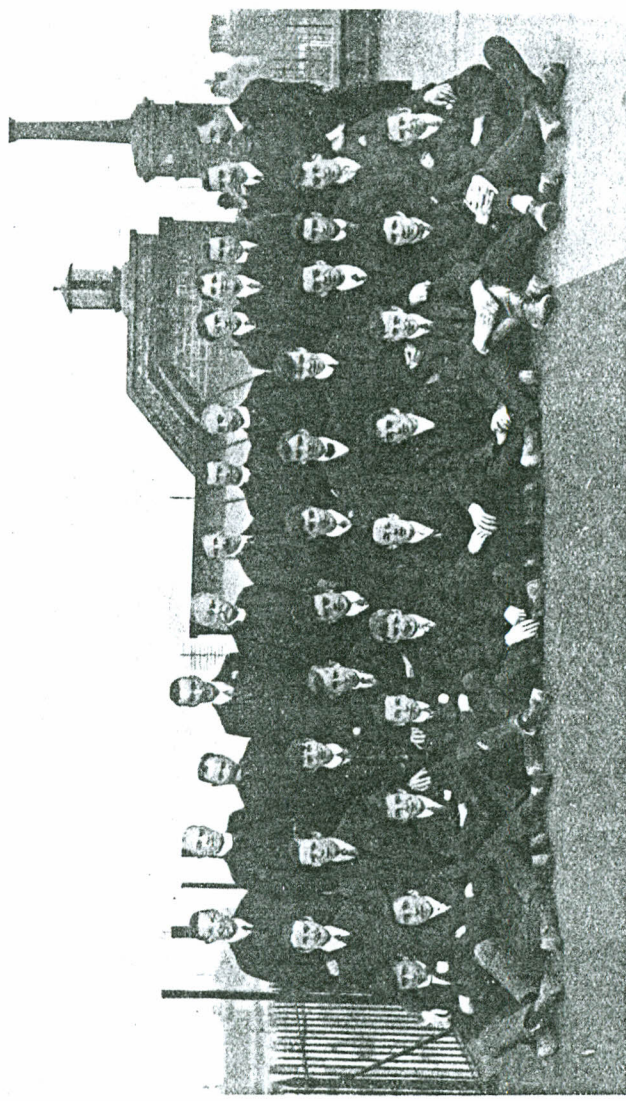


1910/1911



Some of the Headquarters Staff with Party of Young Emigrants, trained at Emigration Training Farm, Hempstead.

### Lads and the Land.

In our last Annual Report, we referred to a disastrous fire which had taken place at our Farm Colony, Hempstead. The damage has since been made good, and advantage has been taken of this opportunity to rebuild the damaged barns and outbuildings in a more substantial and permanent style. A new wing is now under construction, designed to receive an additional number of lads for training for emigration. Part of the work has been done by the inmates of the Farm themselves. The new wing has proceeded rather slowly, for want of funds, but it is hoped that it will shortly be completed and ready for use.

This further accommodation is urgently required. We are able usefully and beneficially to place almost any number of suitable lads in the Colonies, under circumstances which will, humanly speaking, ensure useful, happy lives, instead of the pinched, narrow existence which they would have led at home.

The lads chosen are such as are of good character and physique, and who, generally owing to their having commenced life, on leaving school, as errand-boys, newspaper sellers, golf-caddies, van-boys or some similar "blind-alley" employment, find themselves without employment and without prospect of getting work. Before they have had time to lose the habit of industry, we endeavour to get hold of them, and train them for permanent employment, first at our Lads' Home at Stonebridge Park, N.W., and afterwards those selected for emigration receive at least two months' training at Hempstead. The full two months' farm training is necessary, in order to obtain the advantage of the system of nominated passages, besides being of incalculable benefit to the lads themselves. Hence the necessity of the additional accommodation at Hempstead. Even so, the number whom we are able to receive is but small

compared with the great numbers of lads who every year emerge, at the age of seventeen or eighteen, from "blind-alley" employments; and a large proportion of whom go to swell the overcrowded casual labour market, eventually becoming unemployed, then unemployable, and finally haunters of casual wards and the Embankment and streets on winter nights. Could this branch of our work be considerably extended, a large portion of the supply of recruits for the army of homeless, starving incapables and semi-capables would at once be cut off.

**To Help  
Forlorn Women.**

Attention has lately been called to the absolute need, existing in London and other great cities, of places where, at a very moderate price, respectable women, without home or friends, can obtain board and lodging in surroundings free from the objections, moral and physical, attaching to the ordinary common lodging-house. The number of such places for women is so small as to be negligible. It is unnecessary to enlarge upon the dangers encountered by women, especially young and inexperienced ones, who have no safe place of refuge. To assist in supplying this undoubted need, we hope shortly to open a new Boarding Home for Women. It will be under the charge of Church Army Sisters, and will, we hope, be a centre of spiritual life, as well as giving to poor women an advantage long enjoyed by men.

**Curing  
Consumption.**

We hope also to open very soon a new Home at Fleet, in Hampshire, for children in the first stages of tuberculosis, when in most cases this terrible disease is still curable by means of fresh air, sunshine and plentiful food. Hitherto we have been compelled, in justice to other inmates, to refuse admission to our Fresh Air Homes to consumptive children, while knowing that in many cases all that the

AK 110-1911

# Annual Report 1910-1911

26

**Hempstead Hall.** It is therefore with special gladness that we record the completion of the works at the Emi-



Street-waif entering Labour Home.

of steady industry, from the peril of joining the overcrowded ranks of casual labour, with the probable result of becoming unemployed and finally unemployable. The lads chosen are such as have been put

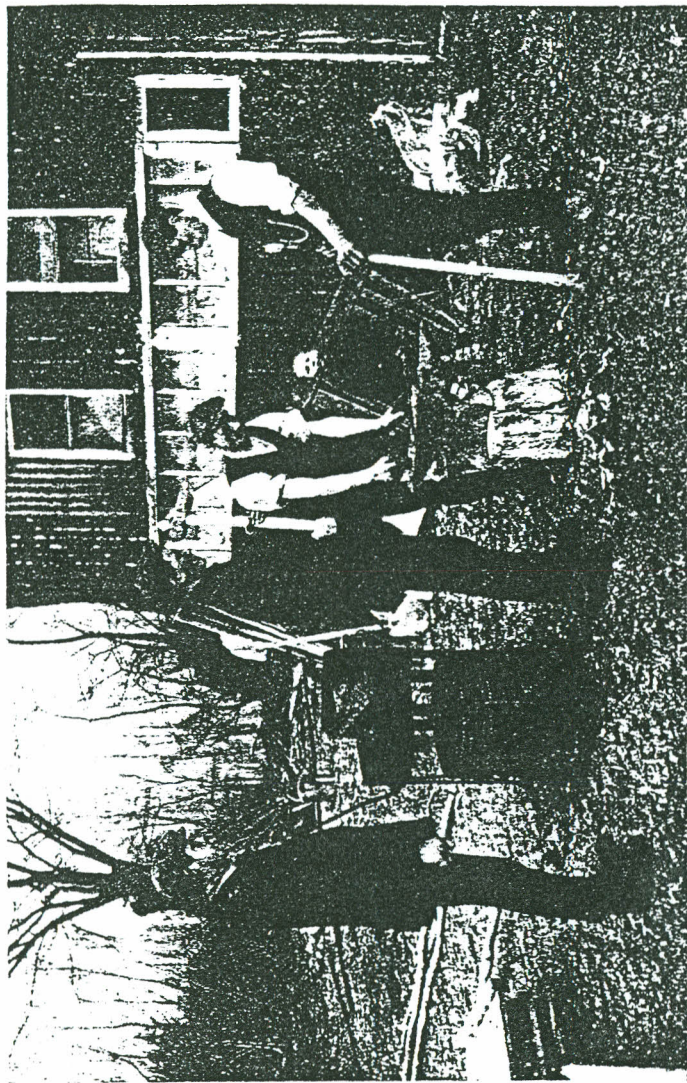
gration Training Farm, Hempstead Hall, referred to in our last Annual Report. They are found to add much to the facility of carrying on the special work for which the estate is now used—the training of lads for work on the land at home or in Australia.

We attach great importance to this special effort for rescuing lads, who are of good character and have not lost the habit

27

into blind-alley employments by their parents on leaving school, with the result that, at the age of seventeen or eighteen, they find themselves cast on the world, not knowing any trade, and without means of livelihood. Such lads are almost forced into the melancholy army of unemployed; and it is from this source more than from any other that there comes the supply of homeless, starving vagrants who haunt the streets at night, cadging for free soup; and passing on their own miseries to their children and remoter generations. Anything that can be done to avert this fate, to save the bright, hopeful lad of seventeen from becoming the hungry, ragged loafer of premature middle-age, is well worth the expenditure of much time and trouble.

# Training at Hempstead Hall



Lads Learning Smith's Work, Hempstead Hall, Essex.

26

or four months' special training for farm life preparatory to going to Australia, to the care of a local Committee with the Archbishop of Brisbane at its head, which



Group of Hempstead Lads.



Learning to Milk.

secures for them well-paid and permanent work on farms, and looks after their material and spiritual welfare. The training which they receive at Hempstead, though